



HORSE FLOATS



*Extreme Comfort*  
*'The Ultimate' Gooseneck*

SEAN: 0275016100

INFO@AREION.CO.NZ

WWW.AREION.CO.NZ



# ABOUT US

*Areion is a NZ owned and operated boutique horse trailer manufacturer that specializes in building what you, the customer, wants.*

*We are very innovative with our ideas to build you the ultimate 'DREAM FLOAT'*

*Our unique construction technique not only ELIMINATES corrosion, but also results in a LIGHTER and STRONGER product.*

*All our floats are fully insulated throughout and installed with a Rubberized Soft Ride Suspension for ultimate comfort*

## NZ QUALITY BUILT TO LAST

### AREION

[WWW.AREION.CO.NZ](http://WWW.AREION.CO.NZ)

# CONTENTS

4

CONSTRUCTION

6

HORSE AREA

8

DROP-DOWN FEEDER WINDOWS

10

PULL OUT RAMP

11

HEAVY DUTY INDUSTRIAL AWNING

12

LUXURY LIVING

13

LUTON BEDROOM

14

STORAGE

15

FULLY EQUIPED KITCHEN

16

BATHROOM

17

SELF SUFFICIENT

18

SPECIFICATIONS

AREION

[WWW.AREION.CO.NZ](http://WWW.AREION.CO.NZ)



# CONSTRUCTION



Composite fibreglass foam core walls, roof & barn doors for very high strength. These floats are lightweight, FULLY INSULATED with smooth clean finishing's internal and external.

100 % NZ made. Quality built to last.

NZ marine grade aluminium chassis & aluminium flooring throughout

These floats are lighter, rust & rot free.



The rubberized silent ride load sharing tandem suspension system

As the MOST EQUILIZED trailer suspension on the market, its unique design – a walking beam riding on a single pivot point – means an equal load on all tyres at all times. This makes for an air-like ride quality: SMOOTH and SILENT, even under the heaviest of trailer loads.



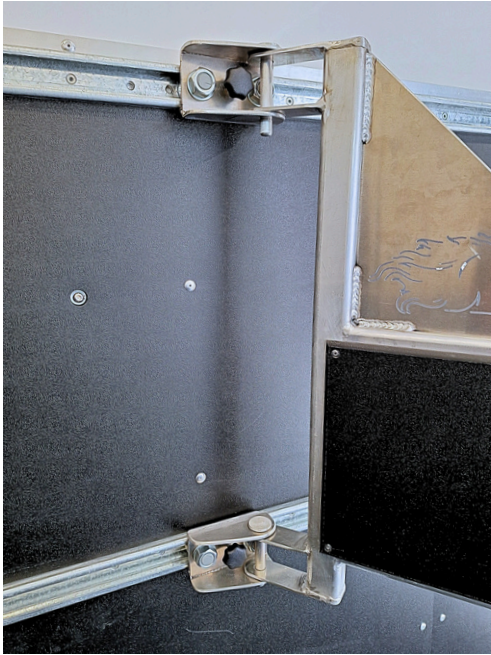
Using the rubberized silent ride suspension and being fully insulated throughout means everyone & everything will travel in ULTIMATE COMFORT and will suit the coldest temperature.



# HORSE AREA

- FULLY INSULATED
- Stainless steel door locks, latches & tie up hooks (inside & outside)
- 10mm Non-slip rubber flooring glued/sealed with 3 decent drains
- 10mm thick polyethylene on all 3 walls
- Smooth edges
- Windows with fly screens and bars
- Roof vent with fly screen





- Large adjustable horse bays (600-900mm) averaging 800mm in width
- 2300mm head height
- Removable & adjustable swinging dividers on a slide track
- Large fibreglass swing out tack box (fitting 3 western saddles & fully waterproof)





# *DROP- DOWN FEEDER WINDOWS*



- To be used as traditional slide window with fly screen and safety bars for ventilation
- Intricate hinge system, and an aluminum frame with bars on the inside, that opens & closes separately, but can remain up when the window portion is "dropped down", for optimum ventilation and horse's protection
- Completely drops down to open up window frame to feed your horse
- Windows are tinted to protect your horse from harmful UV rays





# PULL OUT RAMP



Our unique slight away ramp gives you the ability to choose Step up or Ramp. Making the float very versatile for other purposes

# HEAVY DUTY INDUSTRIAL AWNING

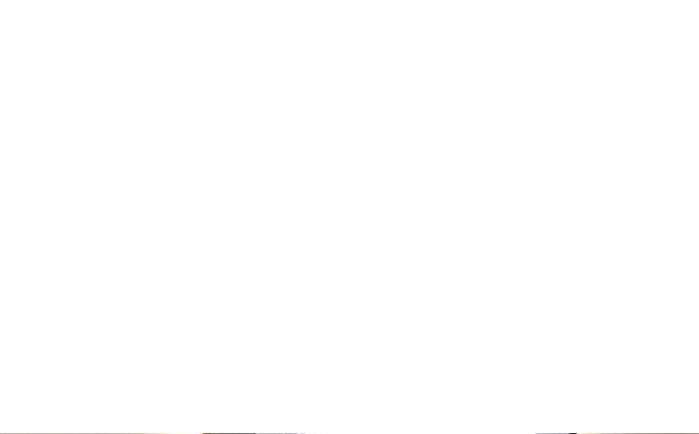


The strongest awning system available in New Zealand

Quick and easy – just pull out, push in for instant shade and shelter

No outside legs necessary

Housing can be used as a gutter, so you can fill up your water tank when it rains



# LUXURY LIVING

- All the comforts from home
- Luxurious upholstery on comfortable couch
- Smart LED feature lighting throughout
- USB charging points
- Diesel central heating for those that want to stay nice and warm all throughout the seasons
- Fully equipped kitchen





- Your comfortable bed away from home
- Always made up and out of the way
- Enormous amount of storage in wardrobe and cupboards
- Skylight with blind, fly screen & LED lighting
- Reading lights



# LUTON BEDROOM



Settee has large storage underneath accessible through outside locker door for hay bales, horse food etc.

Under floor storage with raised floor in living room

# STORAGE



# FULLY EQUIPPED KITCHEN

With all the luxuries from home

- Ample storage
- Clean surfaces
- High quality hardware
- Cooker 2 or 3 burner/ oven with grill
- Range hood
- 85L / 130L fridge
- Pantry





- A comfortable fixed bathroom
- High pressure hot and cold shower
- Plumped in cassette swivel toilet.
- Clever design levelled walk through to horse area

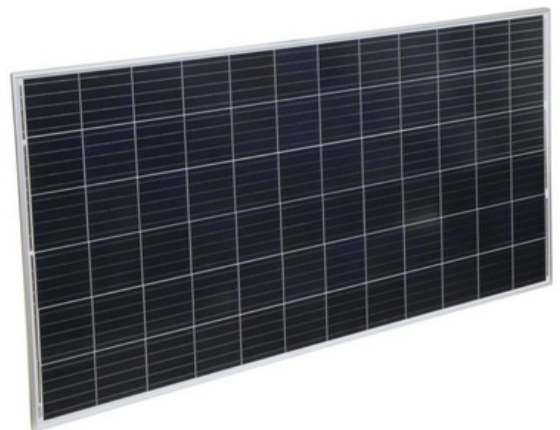
# BATHROOM



# SELF SUFFICIENT

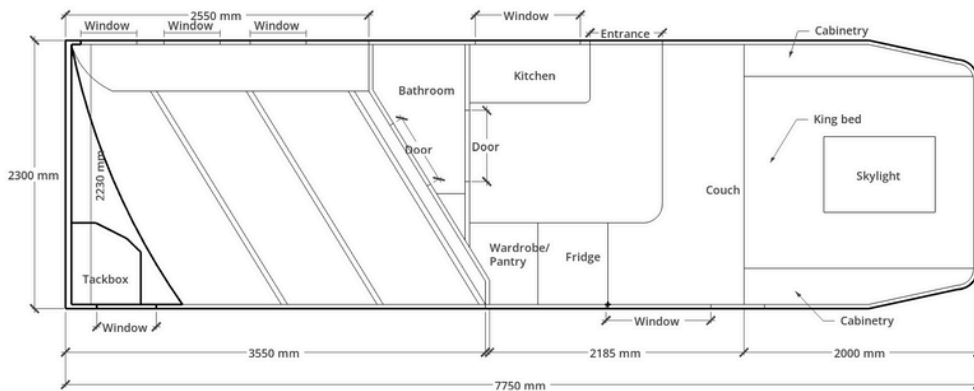


- 200L Water tank
- Water pump & plumbing options for hot & cold
- Solar Panels
- Lithium or Gel house batteries
- USB ports in living
- Horse & reverse camera's with 7inch screen
- Water heater diesel or LPG (externally vented)
- 240V
- Diesel central heating 5KW



# SPECIFICATIONS

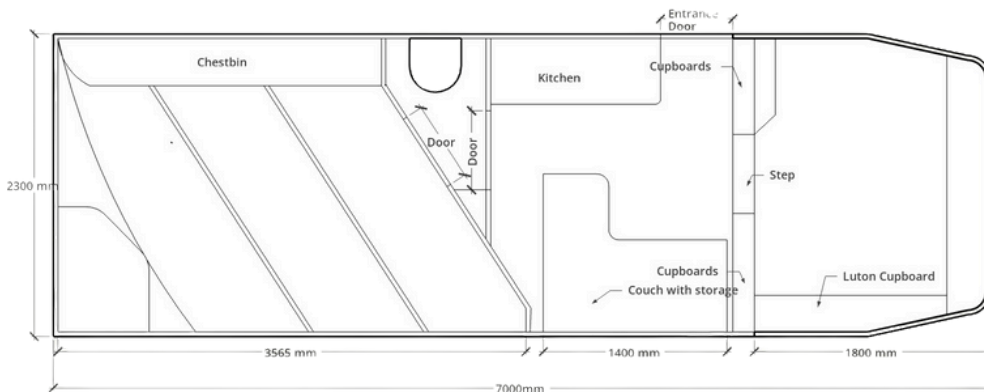
## 3 Horse Angle Gooseneck



### MEASUREMENTS

OVERALL LENGTH	7750 MM
BODY LENGTH	5750 MM
EXTERNAL HEIGHT	2900 MM
INTERNAL HEIGHT	2300 MM
TARE WEIGHT	2400 KG
BAY LENGTH	2650MM
BAY WIDTH	600-900 MM

## 3 Horse Angle Gooseneck with Couch slideout



### MEASUREMENTS

OVERALL LENGTH	7000 MM
BODY LENGTH	5000 MM
EXTERNAL HEIGHT	2900 MM
INTERNAL HEIGHT	2300 MM
TARE WEIGHT	2400 KG
BAY LENGTH	2650 MM
BAY WIDTH	600-900 MM

# TESTIMONIALS



## Helena Mason

"I am so pleased with my Areion Horse float, it is just what I had always wanted in a float. Really happy with the layout and simplicity of design, also the ease with towing, hooking up etc. Not to mention such wonderful customer service, always there to help whenever I needed to chat about the build of my float... you made this part super easy. Keep doing what you are doing, this design and service is one out the box for sure !! "

## Nicole Brown

" Over decades I have been using horse floats in Germany with exceptional high standards. Now living in New Zealand, I have been struggling to find a match until working with Sean and his team. I'm now the proud owner of a double angle loader float with living compartment in the front. Plenty of storage for Hay, tack, and wet weather gear as well as comfortable living are just some of the features that I value. My float is loved by my horses, who are traveling very well and happy as much as by my family. We recently enjoyed our camping holiday with the bikes and outdoor gear in the horse compartment. My son loves the bunk bed above our double comfortable memory foam assisted double bed.

The Areion horse floats incorporate clever functionality, perfect size as well as impeccable workmanship. Sean and his team have not just excelled in crafting my horse float, the follow up care and correspondence has been exceptional."



## Sarah & Phil Dalziell-Clout

"We are rapt with our Areion trailer which is a bespoke design that Areion happily accommodated & made happen. It travels horses spaciously & safely, is multi-use with bike tie-downs, while also accommodating our entire family in comfort & warmth. From initial float inquiry right through to after-sale service, Sean & Tanya have been consummate professionals - great communicators, honest, accommodating & helpful. We feel a little spoiled every time we use & it and can't recommend Sean, Tanya & Areion highly enough - they are experts in the field but were respectful of our requirements and made our individual needs become a reality!"

### Grace & Adam Evers

We chose Areion because we wanted a local coachbuilder who could accommodate a very bespoke build. Sean and his team did exactly that, listening to everything we requested, troubleshooting difficult design options, and using state-of-the-art materials. The end product was market-leading from both a quality and design perspective, and their communication throughout was faultless. Advanced suspension, innovative storage options and safe, horse-friendly finishing is what set this apart from other products on the market. My husband is fastidious at best, some might say challenging! Sean achieved



everything we asked for and we were thrilled with the end product. We cannot recommend Areion highly enough for any equestrian or motorhome vehicle fabrication.

### National 120 km Endurance Champion Ola Schreurs

I have been so impressed with my new horse float purchased from Areion in 2021, it far exceeded my expectations upon delivery, and has continued to do so from that moment, My horse travels so well and when I arrive at events my horse Cercei is relaxed & ready to compete. So much so that I used my new Areion trailer for the 2022 season and won the National Endurance Championship Title,!!! I strongly believe in having a relaxed and non-fatigued horse before you start your ride & this trailer delivers that. I have tried a lot of other trailers on the market and have been disappointed but finally I have my dream trailer

